

Introducing the Whitney M. YOUNG Scholars Class of 2010



Martez Barbee, Jr.
 Louisville Male High School
 University of Kentucky



Delaney Bartlett
 Ballard High School
 University of Kentucky



Richard Beasley
 Louisville Male High School
 University of Kentucky



Tommesha Bell
 Doss High School Magnet Career Academy
 University of Louisville



Ciara Camp
 Central High School Magnet Career Academy
 University of Kentucky



Quentin Childers
 Central High School Magnet Career Academy
 University of Louisville



Daryelle Churchill
 Butler Traditional High School
 Jefferson Community & Technical College



Blake Fowler
 Seneca High School
 University of Kentucky



Brandewyne Fowler
 Seneca High School
 Northern Kentucky University



Jessica Galloway
 duPont Manual High School
 Murray State University



Sylvia Garmany
 Fairdale High School
 Western Kentucky University



Ana Garner
 Louisville Male High School
 University of Kentucky



Da'Chelle Goodman
 Pleasure Ridge Park High School Magnet Career Academy
 University of Louisville



Amber Hatchell
 Eastern High School
 University of Kentucky



Carson Helton
 duPont Manual High School
 Northern Kentucky University



Andrea Hill
 Pleasure Ridge Park High School Magnet Career Academy
 University of Kentucky



Zachary Johnson
 Louisville Male High School
 University of Kentucky



Marcus Kelly
 St. Xavier High School
 Ball State University



Ja'Arra Lewis
 Moore Traditional High School
 Eastern Kentucky University



Dominique Luster
 Brown School
 University of Kentucky



Ty'Tiana Murry
 Shawnee High School Magnet Career Academy
 Eastern Kentucky University



Chisom Omenyinma
 Louisville Male High School
 University of Kentucky



Oloruntoba Omotinugbon
 Jeffersonville High School
 University of Kentucky



Jordan Paul
 Trinity High School
 University of Louisville



Andrew Reece
 Atherton High School
 Murray State University



Josue Romero
 Louisville Male High School
 Georgetown College



Christien Russell
 Central High School Magnet Career Academy
 University of Kentucky



Cornelia St. Gerard
 Central High School Magnet Career Academy
 Jefferson Community & Technical College



Darius Stone
 Butler Traditional High School
 Northern Kentucky University



Eriauna Stratton
 Louisville Male High School
 University of Kentucky



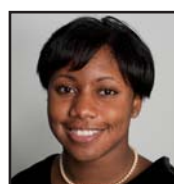
Britney Thomas
 Butler Traditional High School
 University of Kentucky



NaVonda Thomas
 Ballard High School
 Western Kentucky University



Ayzia Wells
 Butler Traditional High School
 Kentucky State University



Chastity White
 Central High School Magnet Career Academy
 Clark-Atlanta University



Latisha White
 Assumption High School
 Jefferson Community & Technical College



Andreiona Williams
 Butler Traditional High School
 Jefferson Community & Technical College



Dianca Willis
 Ballard High School
 Jefferson Community & Technical College



*Patrick Wemes, Eastern High School, University of Louisville (photo unavailable.)

Dear Friend,



This year Lincoln Foundation celebrates its 100th year anniversary since the founding of Lincoln Institute by Berea College in January of 1910. Today Lincoln

Foundation students benefit from a culture consistent with the mission and history of Lincoln Institute. Lincoln Foundation is proud to continue this legacy by offering premiere year-round non-traditional educational programs for disadvantaged students. I am extremely proud of our 38 high school and 19 college graduates in 2010. The average number of college graduates for the last four years is 18, both undergraduate and graduate. The academic achievement and graduation by our Scholars is the highest form of return on investment for our donors. Our success would not be possible without the sacrifice, dedication, and pursuit of excellence established by the alumni of Lincoln Institute.

The 15th Annual Evening of Jazz fundraiser was a phenomenal success thanks to our sponsors. Words cannot express my gratitude for the tremendous support of the annual fundraiser by our Board of Trustees. The Michael Houston Group, Ron Jones Quartet, and The Louisville Leopard Percussionists delivered fantastic performances. It was an honor and privilege to present the Centennial Spirit of Excellence Award to world renowned Muhammad Ali and his wife, Lonnie, for their tremendous humanitarian works; likewise the Spirit of Excellence Award posthumously to community leader, George Unseld. It was an exciting and memorable evening enjoyed by all. Save the date of August 27, 2011 for our 16th Annual Evening of Jazz!

Warmest regards,

Larry M. McDonald
President

Lincoln Foundation Historical Timeline

- 1904** - Passage of the Day Law halts interracial education at Berea College in Berea, Kentucky.
- 1908** - Day Law is ruled constitutional by the United States Supreme Court.
- 1909** - Berea College Board of Trustees purchases three farms totaling 444.4 acres in Lincoln Ridge, KY, the site of Lincoln Institute.
- 1910** - Lincoln Institute becomes a legal entity with the filing of the Articles of Incorporation and the Lincoln Institute of Kentucky Board of Trustees is established to oversee and manage its assets.
- 1911** - Cornerstone for Berea Hall is laid in October.
- 1912** - The Lincoln Institute is dedicated and 85 black students enroll on October 1.
- 1928** - The junior college is closed in order to focus on the core mission of Lincoln Institute being an elite boarding high school for blacks.
- 1935** - The Board of Trustees decides to close Lincoln Institute because of financial reasons. However, with the help of J. Mansir Tydings, Whitney Young, Sr. conceives and implements the "Faith Plan," which raises money and recruits new students, enabling the Lincoln Institute to survive. Whitney Young, Sr. is named the first African American principal of the Institute; in 1949 his title changes to President, a position he holds until the school closes in 1966.
- 1947** - Lincoln Institute becomes a public school; Lincoln Institute of Kentucky is renamed the Lincoln Foundation.
- 1950** - Kentucky General Assembly repeals the Day Law. Kentucky slowly begins the process of integrating schools.
- 1954** - The U.S. Supreme Court's Brown vs. Board of Education decision strikes down "separate but equal" education.
- 1966** - The rise of desegregated education forces closure of Lincoln Institute. The Lincoln School for gifted yet disadvantaged students is established on the Lincoln Institute property.
- 1970** - The Lincoln School closes with one graduating class.
- 1972** - The Whitney M. Young, Jr. Job Corps Center opens on the Lincoln Institute campus in Simpsonville under a contract with the U.S. Department of Labor.
- 1974** - Lincoln Foundation President, J. Mansir Tydings, retires and Dr. Samuel Robinson is appointed Executive Director and later President.
- 1990** - Lincoln Foundation's signature program, the Whitney M. YOUNG Scholars Program®, is created to serve the educational needs of academically talented, economically disadvantaged middle and high school students.
- 2001** - Board of Trustees Vice Chair, Larry M. McDonald, is appointed President of Lincoln Foundation.
- 2010** - Lincoln Foundation continues to operate premier year-round non-traditional educational programs for disadvantaged students and scholarship assistance.



Lincoln Institute Class of 1916



Whitney M. YOUNG Scholars Program® Class of 2010

» 2009 Annual Report

Financial Report

Fiscal Year: January 1, 2009 to December 31, 2009

REVENUES, GAINS AND SUPPORT

Contributions	\$257,725
Rental Income	411,370
Grants	58,159
Program Fees	5,873
In-kind Contributions	97,690
Special Events	50,550
Investment Gains (Losses)	612,171
Other	60,248
Total Revenues, Gains and Support	1,553,786

EXPENSES

Program Expenses	669,345
Operating Expenses	223,102
Fundraising Expenses	121,533
Grants and Scholarships	54,983
Special Events	36,942
Total Expenses	\$1,105,905
Change in Net Assets	447,881
Net Assets at Beginning of Year	6,077,878
Net Assets at End of Year	\$6,525,759

Annual Statistics

- ▶ Approximately 400 Students Served
- ▶ 64 Elementary/Middle/High Schools Served
- ▶ 986 Volunteer Hours

Whitney M. YOUNG Scholars Program®

- ▶ 100% of the class of 2009 (32) graduated from high school
- ▶ 100% attended college
- ▶ \$1,518,768 in College Scholarship Awards
- ▶ 227 Scholars (grades 7-12)
- ▶ 4.8 average years in the program
- ▶ 77% Black; 12% White; 6% Hispanic; 3% Asian; 2% Other
- ▶ 3.1 average senior G.P.A.
- ▶ 20 average senior ACT Score
- ▶ 5 - Governor's Scholars Program
- ▶ 5 - Beta Club
- ▶ 5 - National Honor Society

College Scholars

- ▶ \$54,983 in Lincoln Foundation Scholarship Endowment Awards
- ▶ 16 Scholars graduated from college in 2009 (7 – B.S., 9 – M.S.)

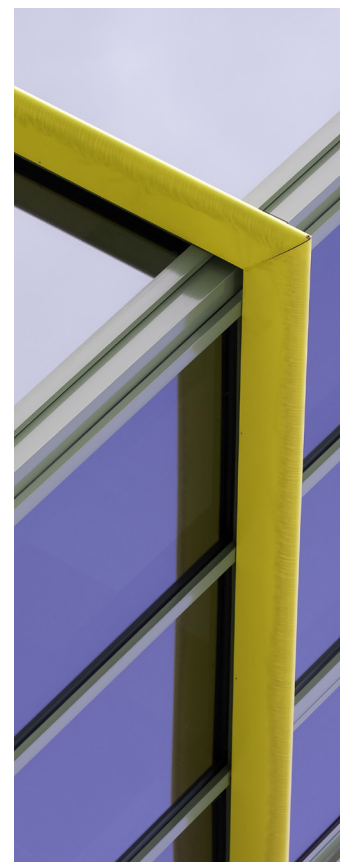
Educational Opportunity Scholarship Awards

- ▶ \$70,549

» Our 2010 College Graduates

Name	Degree/Honors	College/University
Wilson Aina	B.S. Computer Graphics	Murray State University
Shareka Alexander	B.A. Journalism	Indiana University Southeast
Dominique Baker	B.S. Nursing	University of Kentucky
Robert Buckner	B.A. Marketing	Gannon University
Raul Castellanos	B.S. Biology	University of Miami
Shauna Cowherd	B.A. Theater (Dance)	Northern Kentucky University
Devon Davis	B.A. Anthropology & Education	Emory University
Marina Dolzhanskaya	B.S. Nursing	Bellarmino University
Sherry Durham	B.S. Organizational Communication	Murray State University
Tomisin Elelu	B.S. Occupational Safety & Health	Murray State University
Natalee Jones	B.S. Communications	University of Louisville
Tunice Masden	B.A. Social Work, <i>Cum Laude</i>	Northern Kentucky University
Kendrick Quisenberry	M.A. Community Counseling	Murray State University
Carl "Tres" Russell, III	B.A. Sociology	Centre College
Tiffany Slaughter	B.S. Psychology	University of Kentucky
Morgan White*	B.S. Finance	Indiana University
Kyra Williams	M.S. Geosciences	Murray State University
Sanita Woolfolk	B.A. Political Science	University of Louisville
Kevin Yu	B.S. Mechanical Engineering	University of Louisville

Note: *December 2009 Graduate



Lincoln Foundation Board of Trustees

Gary W. Brown
Chair

John A. Johnson
Vice Chair

Janice Porter, CPA
Treasurer

Vivian Blade
Secretary

Andrew Baskin

Marty Bell

Mark Boles

Philip Buckman

Lynn M. Bynum

Ed Chestnut

Willie Fleming

Robert K. Holmes, Jr.

DeVone Holt
Alyce French Johnson

Jocelyn Johnson

Larry M. McDonald

Margaret Redmon

Steven P. Sexton

Deborah Benberry Williams

Gwendolyn Young

Dr. Samuel Robinson
President Emeritus

Bettie Johnson
Emeritus

Lee Thomas
Emeritus

Joseph Wimsatt
Emeritus

Our Mission

To provide educational enrichment programs that develop and support youth in overcoming barriers to achievement.



Greater Louisville Inc.



200 West Broadway
Suite 500
Louisville, KY 40202
502.585.4733
www.lincolnfdn.org