

Introducing the Whitney M. YOUNG Scholars Class of 2012



MiRanda Anderson
Seneca High School
Western Kentucky University



Eunice Awonyi
Ballard High School
Asbury University



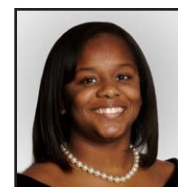
Tiara Bell
Louisville Male High School
Murray State University



**Vance William
"Percy" Blade**
Eastern High School
Western Kentucky University



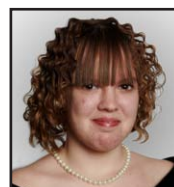
China Burrus
Doss High School
Western Kentucky
University



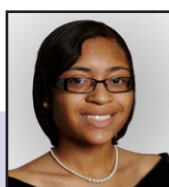
Mariah Carpenter
Louisville Male
High School
Murray State University



Olivia Edison
St. Francis High School
University of Kentucky



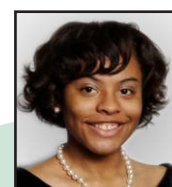
Autumn Fox
Waggener High School
Hanover College



Tanisha Garrett
Louisville Male High School
Bellarmine University



Danisha Gazaway
Eastern High School
University of Kentucky



Adauri Hall
duPont Manual
High School
Eastern Kentucky University



Kamahl Hess
Central High School
University of Pikeville



Johnique Ison
duPont Manual High School
Alabama A&M University



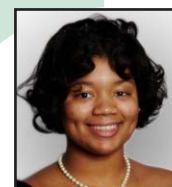
J'Aunna Ivy
Fern Creek Traditional
High School
Indiana University Southeast



Kyra King
Louisville Male High School
Indiana University Southeast



Takisha Mack
Central High School
Eastern Kentucky
University



Erica Martin
Louisville Male
High School
University of Louisville



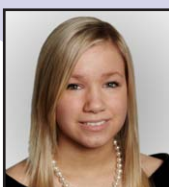
Seron Martin-Collier
Jeffersontown
High School
Campbellsville University



Keith Miller
Western High School
Campbellsville University



Yahdiel Ivonne Mora
Christian Academy
of Louisville
Hanover College



Zorana Prajdic
Fern Creek Traditional
High School
University of Louisville



Niasha Sawyers
Mary Ryan Academy
Bellarmine University



Keli Scott
Butler Traditional
High School
Lindsey Wilson College



Gracia Sircar
Louisville Male
High School
William Carey University



Jeffries Smith, Jr.
Butler Traditional
High School
Jefferson Community &
Technical College



**Karvontay
Stephenson**
Central High School
Murray State University



Kenya Thompson
Iroquois High School
Kentucky State University



Chelsey Thrasher
Louisville Male
High School
Southern University



TaShana Williams
Butler High School
University of Louisville



Tim Witchard, Jr.
Central High School
Western Kentucky
University

Congratulations to our 2012 College Graduates

Name	Degree	College/University	Honors
Courtney Allen	B.S. Exercise Physiology	University of Louisville	
Yunina Barbour-Payne	B.A. Integrative Studies	Northern Kentucky University	
Raven Bartlett	B.S. Nursing	University of Kentucky	Magna Cum Laude
Aysha Bell	B.A. Mass Media Arts	Clark Atlanta University	
Juan Casa Del Valle	B.A. Business	Murray State University	
Ayana Churn	B.A. Psychology	Hampton University	Cum Laude
Emily Dunn (Grey)	B.S. Early Elementary Education	University of Louisville	Cum Laude
Angel Edelen	B.A. Social Work	University of Kentucky	
Tomisin Elelu	M.S. Occupational Safety & Health	Murray State University	
Tara Fulkerson	B.A. Political Science & Psychology	Bellarmino University	
Marisa Hall	B.A. Elementary Education	Kentucky State University	
Kamla Jones	B.S. Community Communications & Leadership Development	University of Kentucky	
Keisha Mabry	M.Ed. Secondary Education	University of Missouri-St. Louis	Summa Cum Laude
Reginald McDaniel, Jr.	B.S. Electronic Media & Broadcasting	Northern Kentucky University	
Chinaecherem Omenyinma	BSA Accounting & BBA Analytics	University of Kentucky	
William Payne	B.A. Business Administration	Morehouse College	Magna Cum Laude Phi Beta Kappa
Dejanease Pressley	B.S. Forestry	University of Kentucky	
Shellese Shemwell	B.A. Spanish	Howard University	Magna Cum Laude
James Standard, Jr.	B.A. Business Administration & Communication	Bellarmino University	
Amy Szerletich	B.S. Wildlife & Conservation Biology	Murray State University	
Ta'Neka Vaden	DNP Nursing Practice	University of Kentucky	
Timothy Wemes	B.S. Business Administration	University of Louisville	
Montrise Wilson	BSW Social Work	University of Louisville	
Jessica Yu	B.S. Business Administration	University of Louisville	With Honors

Dear Friend,



Lincoln Foundation year-round educational programs empower our students toward academic achievement, leadership, and strong character. Significant emphasis is placed on the development of leadership qualities. I routinely say to students that they must learn to lead, follow, or get out of the way.

Leadership is emphasized relative to academics, athletics, arts, and school auxiliary organizations. Students in the signature Whitney M. YOUNG Scholars Program® learn that colleges are extremely interested in students who achieve academically, demonstrate leadership, and engage in extracurricular activities. At the end of the day, Lincoln Foundation has a proven track record based upon a strong educational culture and Scholar holistic development. Scholars understand that our ultimate goal is college graduation. Each Scholar is strongly encouraged to pursue a graduate degree to compete in today's global economy. Our objective is to create educated, self-sufficient leaders in our community and

beyond. We thank our parents, donors, and trustees for your continuing support of a very deserving group of students.

I am extremely proud of our 24 college and 30 high school graduates in 2012. It is particularly significant to note that Whitney M. YOUNG Scholars obtained 21 undergraduate degrees and three advanced degrees. The results oriented outcomes are directly attributable to the long-term investment in our students from middle school through college. Lincoln Foundation celebrates academic achievement and scholarly behavior.

This summer the National Lincoln Institute Alumni reunion celebrated the 100th anniversary of Lincoln Institute. Berea College facilitated the school opening its doors to 85 black students on October 1, 1912. The reunion weekend included a memorial service on the historic Lincoln Institute campus, banquet, and brunch. I had the privilege of awarding the Distinguished Alumni recognition to the family of Dr. Whitney M. Young, Sr. who is the first inductee in the Lincoln Institute Hall of Fame.

2011 Annual Report

Financial Report

Fiscal Year: January 1, 2011 to December 31, 2011

REVENUES, GAINS AND SUPPORT

Contributions	\$146,560
Rental Income	416,475
Grants	65,452
Program Fees	3,955
In kind Contributions	136,629
Special Events, net	30,247
Investment Gains	376,408
Other	55,352
Total Revenues, Gains & Other Support	1,231,078

EXPENSES

Program Expenses	778,388
Operating Expenses	110,813
Fundraising Expenses	136,360
Grants and Scholarships	57,254
Total Expenses	1,082,815
Change in Net Assets	148,263
Net Assets at Beginning of Year	7,057,716
Net Assets at End of Year	\$7,205,979

Annual Statistics

- ▶ Approximately 386 students served
- ▶ 44 elementary/middle/high schools served
- ▶ 2,007 volunteer hours

Whitney M. YOUNG Scholars Program®

- ▶ 100% of the class of 2011 (30) graduated from high school
- ▶ 100% attended college
- ▶ \$926,463 in college scholarship awards
- ▶ 229 Scholars (grades 7-12)
- ▶ 5 years - average time in program
- ▶ 75% Black; 12% White; 8% Hispanic; 3% Asian; 2% Other
- ▶ 3.0 average senior G.P.A.
- ▶ 20 average senior ACT score
- ▶ 8 - Beta Club
- ▶ 7 - National Honor Society
- ▶ 1 - Governor's Scholars Program

College Scholars

- ▶ \$57,254 in Lincoln Foundation scholarship awards
- ▶ 18 Scholars graduated from college in 2011 (17 Bachelors; 1 Juris Doctor)

Educational Opportunity Scholarship Awards

- ▶ \$68,196

Lincoln Foundation Board of Trustees

Gary W. Brown
Chair

Alyce French Johnson
Vice Chair

Janice Porter
Treasurer

Gwendolyn Young
Secretary

Andrew Baskin
Marshall Bradley, Jr.
Philip Buckman
Michael Carpenter
Ed Chestnut
John Cunningham
Herman Dubose, Jr.

Tim Findley
Brenda Hart
Dr. Dewey Hensley
Robert K. Holmes, Jr.
Brenda Jackson
Ekumene Lysonge
Larry M. McDonald
Dr. Bernard Minnis
Margaret Redmon
Deborah Benberry Williams

Dr. Samuel Robinson
President Emeritus

Lee Thomas
Emeritus

Joseph Wimsatt
Emeritus



Our Mission

To provide educational enrichment programs that develop and support youth in overcoming barriers to achievement



Arts in Education

The Whitney M. YOUNG Scholars Program® provides exposure to the arts, culture, and drama that many students may not otherwise experience. Teaching artists, guest performances, and arts workshops are part of the hands-on, experiential opportunities Lincoln Foundation provides. The tenth grade oration and presentation class uses Shakespeare and theatre to help students grow academically and emotionally as they ready themselves for college. The Scholars learn about conflict resolution through the plays and sonnets of William Shakespeare.

Whitney M. YOUNG Scholar Yunina Barbour-Payne stated, “The specific emphasis that was placed on understanding theatre and using stage presence as a way to command attention and respect in and outside of the classroom has been a skill that I have carried with me. As an aspiring performing artist I appreciate the vernacular approach to theatre works, that didn’t just expect us to regurgitate them, but allowed for us to gain an understanding of historic literature in a way that could be applicable to the present stories of our community.” Yunina attributes her success to her experience in the Whitney M. YOUNG Scholars Program®,

especially the Shakespeare class. She reflects, “Thinking back on my high school years and Whitney M. YOUNG Scholar experience, theater was one of the earliest forms of training I received that truly allowed me to discover my passion and calling in life. I was encouraged by the Shakespeare class, not only because it affirmed what I was learning and practicing as a student artist at the Youth Performing Arts School, but also because of the fundamental skills it afforded me as a Scholar.” Yunina received a B.A. in Integrative Studies with a minor in psychology, theatre, dance, and black studies from Northern Kentucky University in May 2012. She is currently pursuing an M.A. in Performance Studies from Texas A&M.

Dominique Luster, a Whitney M. YOUNG Scholar, stated, “My sophomore year Educational Clinic classes focused on theatre arts appreciation. I believe my initial curiosity in theatre arts stemmed from these classes.” That curiosity sparked an interest in Dominique to pursue the arts as a career. She will graduate from the University of Kentucky in May 2013 with a B.A. in Theatre specializing in Lighting Design and Technology. Dominique already has an impressive resume including a

Fulbright Scholar experience in Germany and as a lighting technician at Actors Theatre of Louisville and the Eugene O’Neill Theater Center in Connecticut. Dominique states, “I have achieved a great deal of success in just a few short years. I attribute much of that success to my skills in communication, organization, planning and my love for philanthropy. Lincoln Foundation and the Whitney M. YOUNG Scholars Program® nurtured and encouraged these talents.” Dominique has served as a recruitment ambassador for the College of Fine Arts and as a technician in several UK productions. Lincoln Foundation is extremely proud of its Scholars and their many accomplishments.



10th grade Scholars learn an Elizabethan dance from Queen Elizabeth I (interpretative actress Megan Caudill)



200 West Broadway
Suite 500
Louisville, KY 40202
502.585.4733
www.lincolnfdn.org